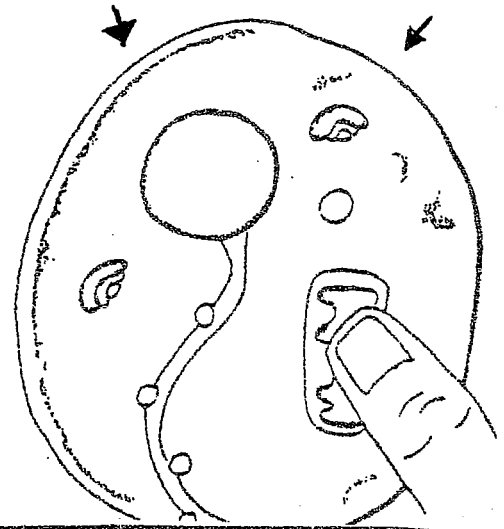


8. Gently press the organelles and their labels onto your model. Use the diagram for step 8 as your guide.

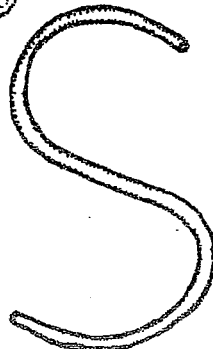
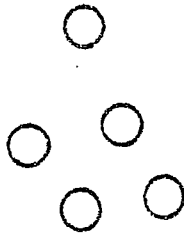
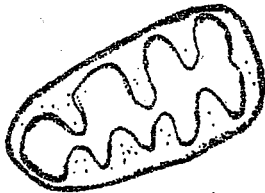
9. Using the high setting, microwave your "cell" on the cardboard for at least 2 minutes and 30 seconds. \*\*If using a regular oven instead, bake the "cell" on a cookie sheet in an oven preheated to 350°F for 15-20 minutes.

10. You will observe the dough rise and waver as it cooks. Be careful removing the "cell" from the microwave as it will be HOT!!!

11. In pen, neatly write your full Ray M.S. heading on the front of the cardboard and title (CELL).



## Organelles



Endoplasmic reticulum

Ribosome

Nucleus

Lysosome

Golgi body

Mitochondria

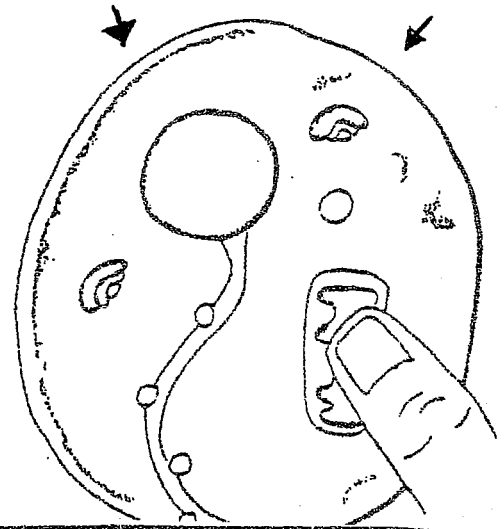
Vacuole

8. Gently press the organelles and their labels onto your model. Use the diagram for step 8 as your guide.

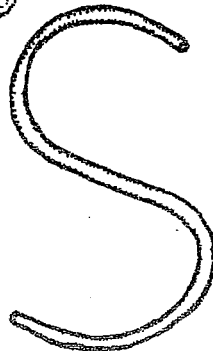
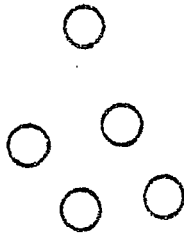
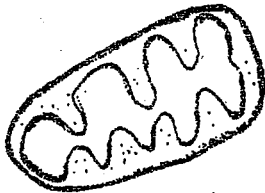
9. Using the high setting, microwave your "cell" on the cardboard for at least 2 minutes and 30 seconds. \*\*If using a regular oven instead, bake the "cell" on a cookie sheet in an oven preheated to 350°F for 15-20 minutes.

10. You will observe the dough rise and waver as it cooks. Be careful removing the "cell" from the microwave as it will be HOT!!!

11. In pen, neatly write your full Ray M.S. heading on the front of the cardboard and title (CELL).



## Organelles



Endoplasmic reticulum

Ribosome

Nucleus

Lysosome

Golgi body

Mitochondria

Vacuole